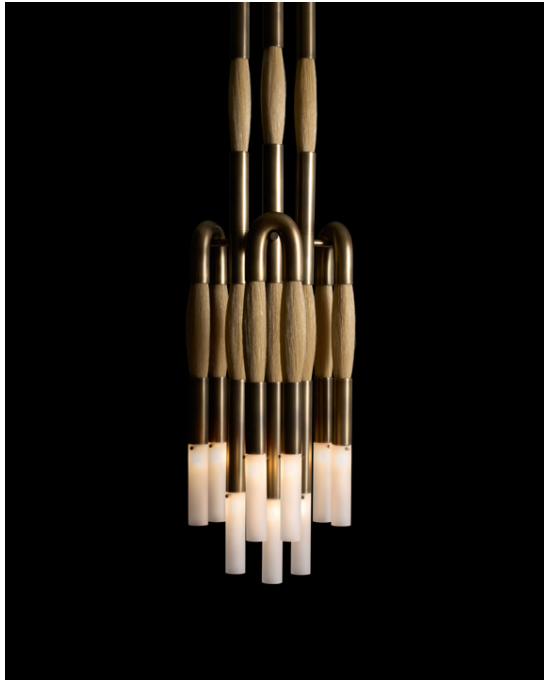


A P P A R A T U S



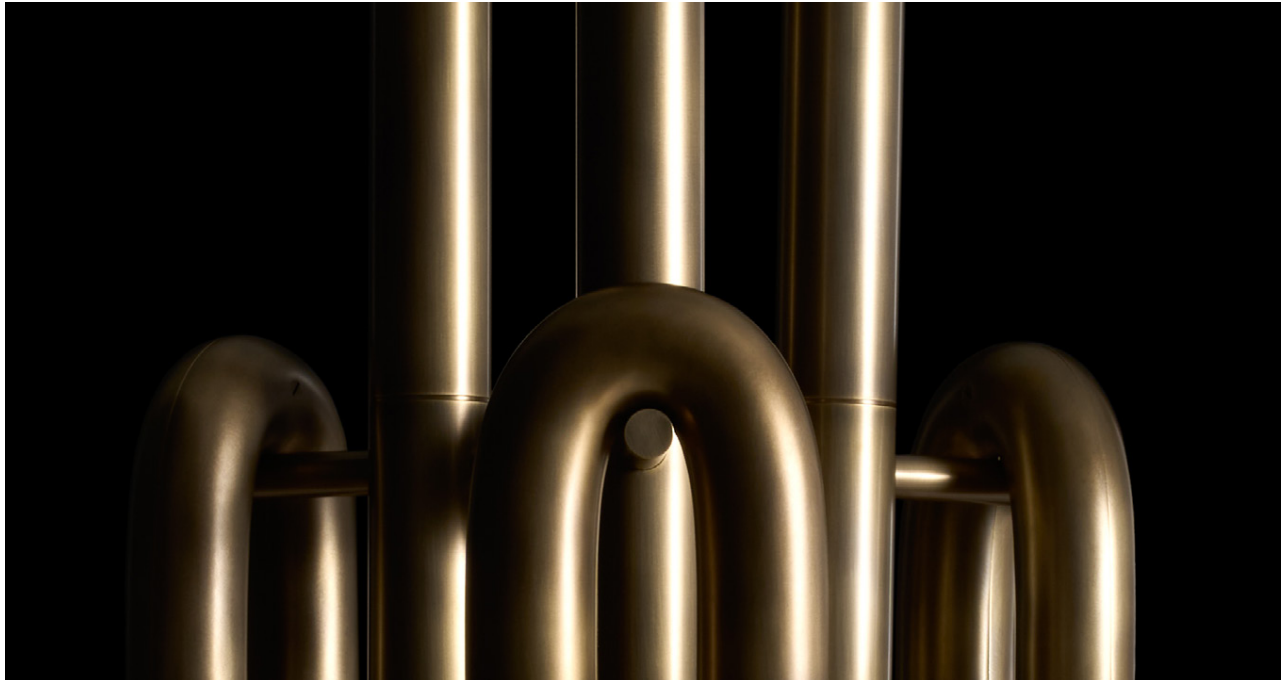
AGED BRASS / PALOMINO HORSEHAIR

HORSEHAIR : 9 PENDANT

REFERENCE THE SENSUAL VERSUS THE MACHINE MADE
HORSES BY STEVEN KLEIN
RIDING TACK

COMPOSITION WEFTS OF HORSEHAIR IMPLY STRUCTURAL FUNCTION
BRASS FORM CAST TO APPEAR DRAPED OVER A PEG

A P P A R A T U S



AGED BRASS

A P P A R A T U S



AGED BRASS



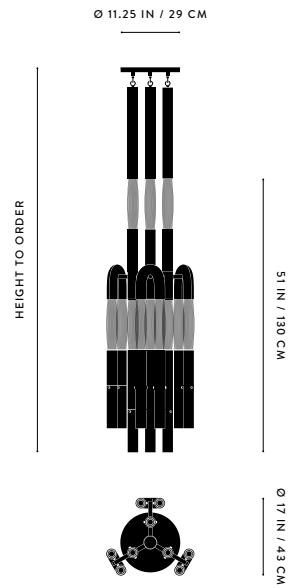
AGED BRASS

A P P A R A T U S



AGED BRASS / PALOMINO HORSEHAIR

A P P A R A T U S

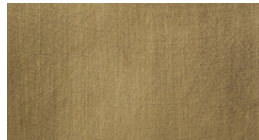


HORSEHAIR : 9 PENDANT

DIMENSIONS	Ø 17 IN Ø 43 CM HEIGHT TO ORDER APPROX. 64 LBS / 29 KG
WEIGHT	
PRICE	FROM E40250 PALOMINO OR JET BLACK FROM E47700 FLAXEN OR SILVER
MINIMUM HEIGHT	62 IN
INCLUDES	85 IN
ADD HEIGHT	E45 / IN
VOLTAGE	120-240 UL / CE
LAMPING	MAX 25W
BULB INCLUDED	9 X 3W DIMMABLE LED BULB 180 LUMENS 2200K 120V : E12 TOTEM I : TINTED 240V : E14 TOTEM I : TINTED
BULB LIFE	30,000 HOURS
DEPOSIT	50% UPON ORDER
BALANCE	DUE PRIOR TO SHIPPING
LEAD TIME	PLEASE REFER TO WEBSITE

FINISHED AND ASSEMBLED BY HAND IN NY
DOMESTIC AND IMPORTED COMPONENTS

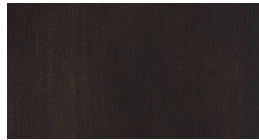
A P P A R A T U S



AGED BRASS



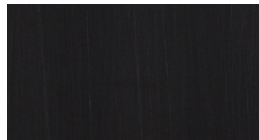
HORSEHAIR - PALOMINO



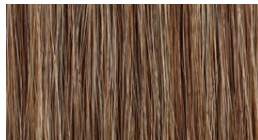
OIL-RUBBED BRONZE



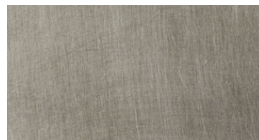
HORSEHAIR - JET BLACK



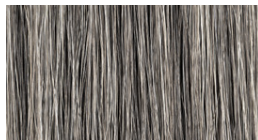
BLACKENED BRASS



HORSEHAIR - FLAXEN



TARNISHED SILVER



HORSEHAIR - SILVER

METAL

HORSEHAIR

HORSEHAIR

AGED BRASS [WAXED]
OIL-RUBBED BRONZE [WAXED]
BLACKENED BRASS [WAXED]
TARNISHED SILVER [LACQUERED] ADD 35%

PALOMINO
JET BLACK
FLAXEN
SILVER